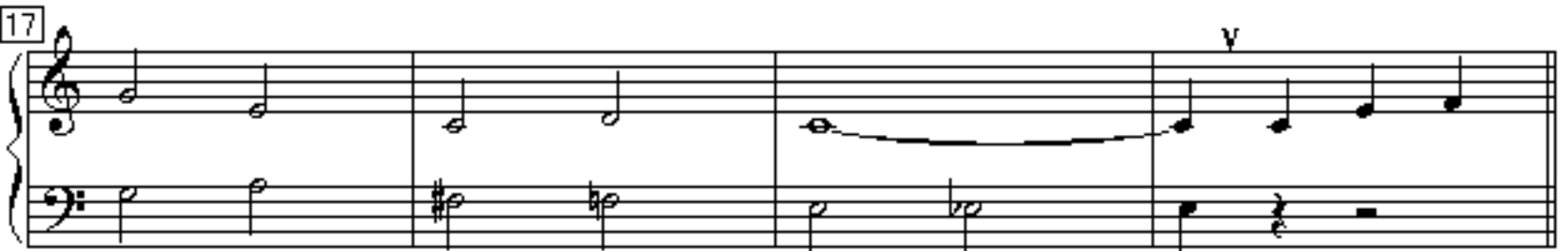
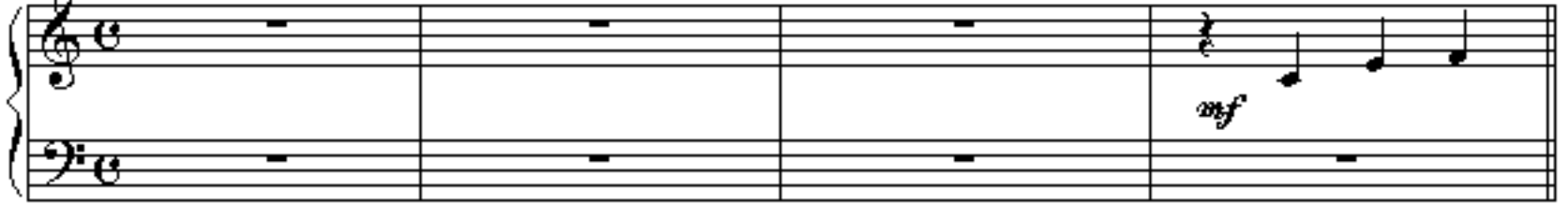


# When the Saints Go Marching In

Traditional

1 *Allegretto Animato*



21

21 22 23 24

25

25 26 27 28

29

29 30 31 32

33

33 34 35 36

37

37 38 39 40

41

41 42 43 44

45

Measures 45-48 of a piano piece. The key signature has one flat (B-flat). The melody in the right hand consists of quarter notes and chords. The bass line in the left hand features a descending eighth-note pattern in measure 45, followed by half notes and quarter notes. Measure 48 ends with a repeat sign.

49

Measures 49-52. Measure 49 has a repeat sign. Measure 50 has a sharp sign (accidental) on the first bass note. Measure 51 has a repeat sign. Measure 52 features a forte (*f*) dynamic and a staccato (*stacc.*) marking on the first chord.

53

Measures 53-55. Measure 53 has a repeat sign. Measure 54 has a repeat sign. Measure 55 ends with a repeat sign.

56

Measures 56-58. Measure 56 has a repeat sign. Measure 57 contains three triplet eighth notes in the right hand. Measure 58 has a sharp sign (accidental) on the first bass note.

59

Measures 59-61. Measure 59 has a repeat sign. Measure 60 has a repeat sign. Measure 61 ends with a fortissimo (*ff*) dynamic and a repeat sign.