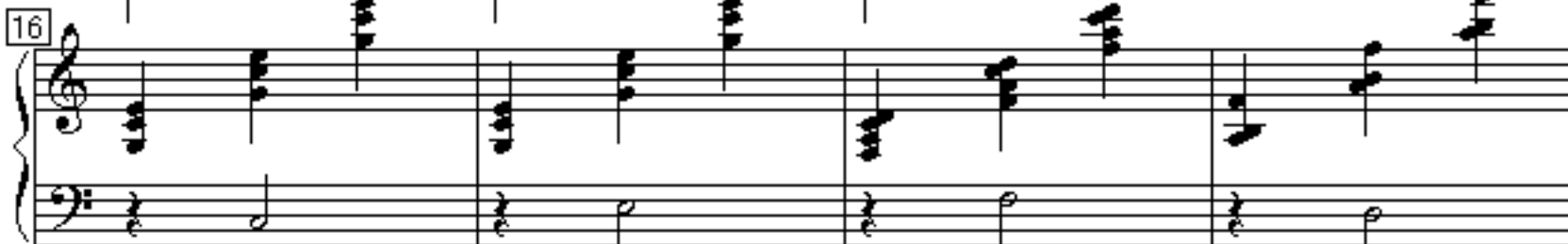


# Piano Concerto No.1

Tchaikovsky

1 *Andantino molto maestoso*



24 *f* 8va

25 26 27

28 (8va)

29 30 31

32 (8va) *accelerando*

33 34 35

36 (8va)

37 38 39

40

41 42 43

44 8va *ritardando*

45 46 47

48 (8va)  $\searrow$   
*a tempo* *ff*

52

56

60 *ritardando*

64

Detailed description: The musical score consists of five systems of grand staves. The first system (measures 48-51) begins with a treble clef, a key signature of one sharp (F#), and a 4/4 time signature. Measure 48 has a dynamic marking of *ff* and a tempo marking of *a tempo*. The notation features a series of chords in the right hand, with an octave shift indicated by (8va) and a downward arrow. The left hand plays a simple bass line. The second system (measures 52-55) continues the fortissimo texture with similar chordal patterns. The third system (measures 56-59) shows a gradual decrescendo. The fourth system (measures 60-63) begins with a *ritardando* marking and features more complex chordal textures. The fifth system (measures 64) concludes the piece with a final chord and a repeat sign.